

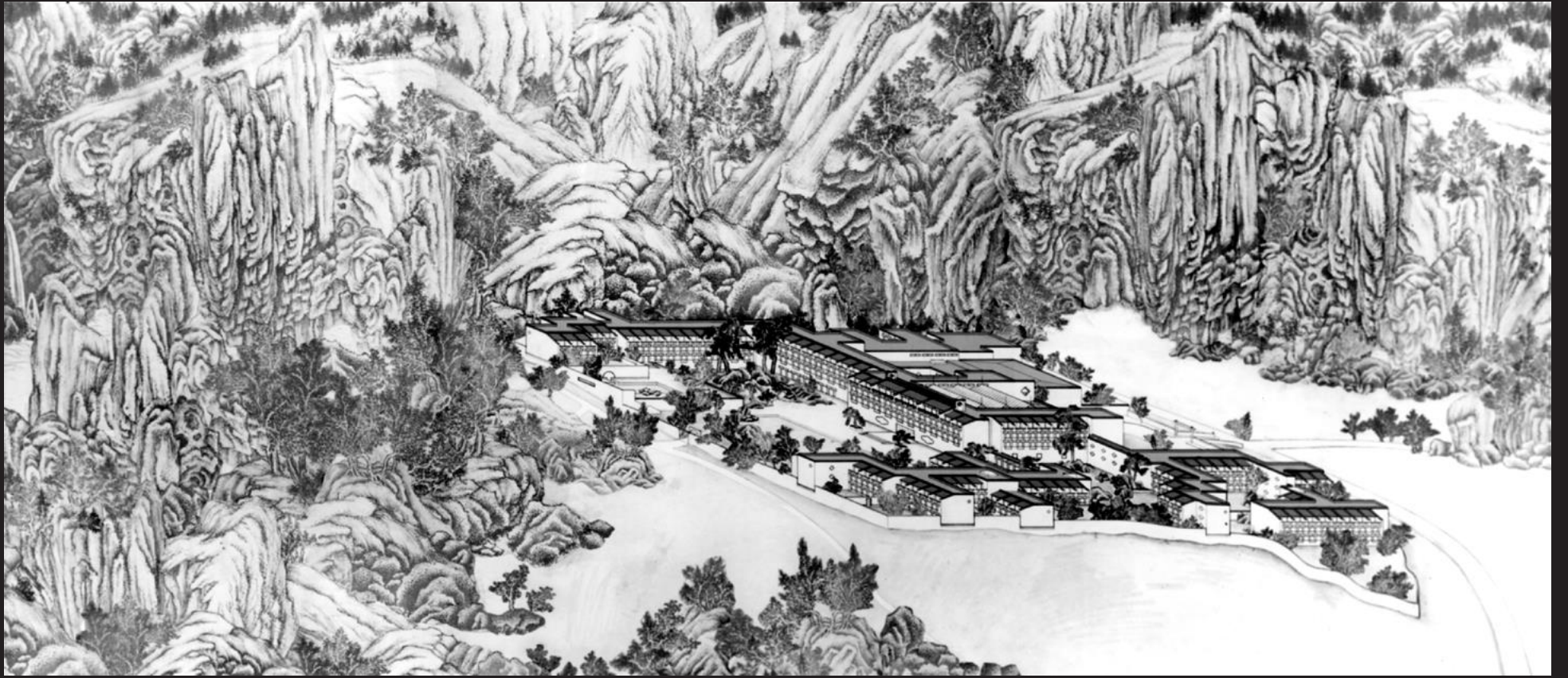
# Tsao & McKown

Calvin Tsao

# Fragrant Hill Hotel

I. M. Pei & Partners

Beijing





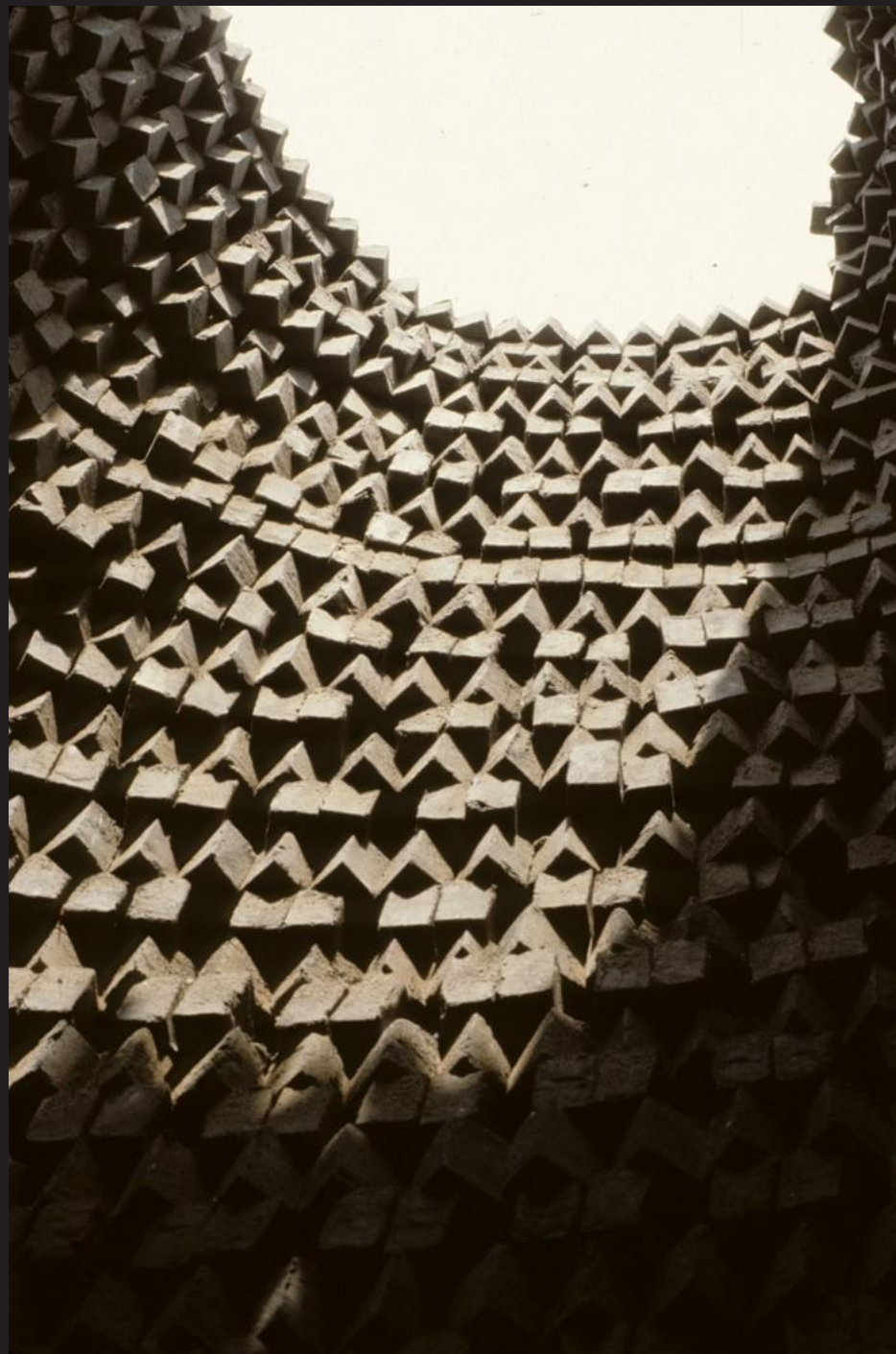




































# Pei's Legacy Today





























Jianfu Palace Museum  
The Forbidden City  
Beijing



青事秋例物紺草  
喜聖澤委素義車  
仙葉七葉人為日寶  
膝三膝玉是蒼膏  
澤平鋪蔥薇雪祥  
光澤臺赤珠霞成  
於闐闐兮甯鼓  
許在兮亦紫祥  
新嘉成筆之作



































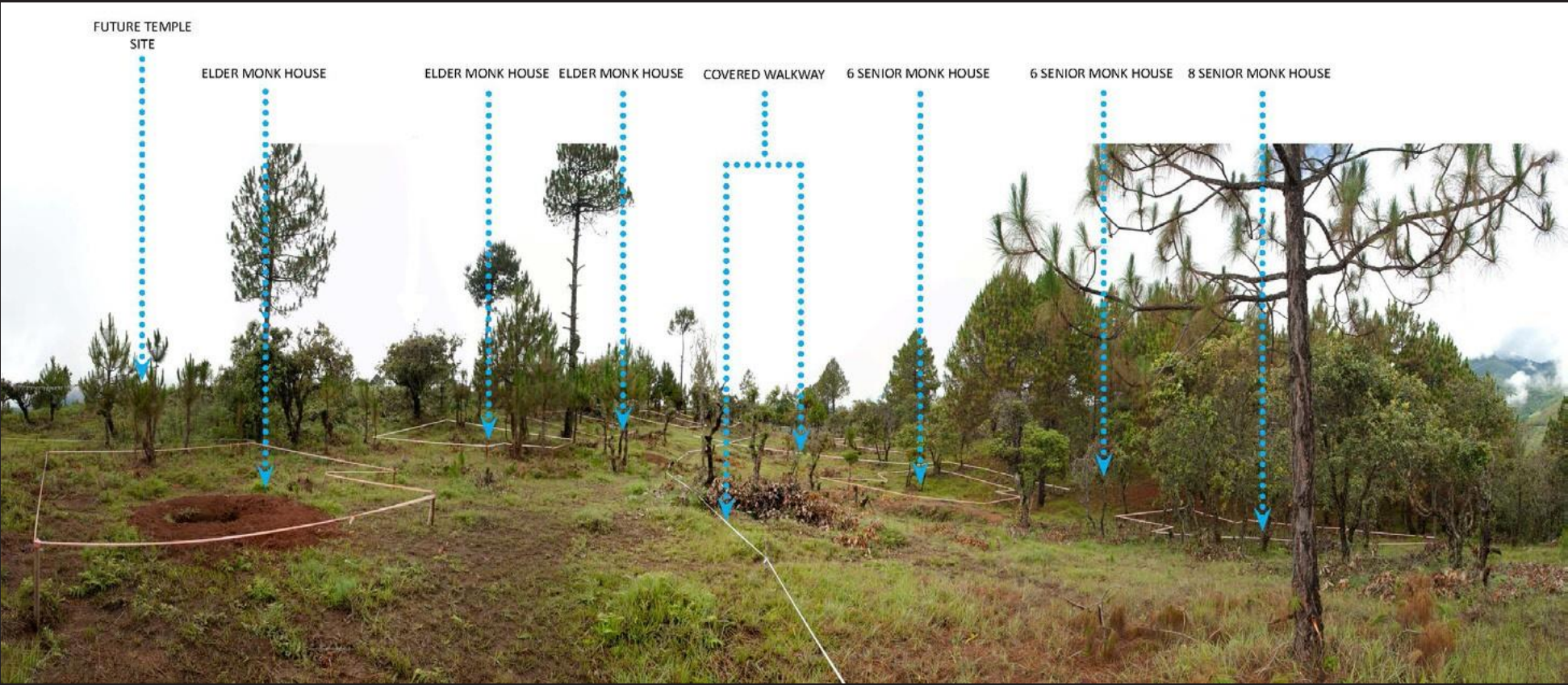






Bhutan Elder  
Sangha Sanctuary  
Bhutan





FUTURE TEMPLE SITE

ELDER MONK HOUSE

ELDER MONK HOUSE

ELDER MONK HOUSE

COVERED WALKWAY

6 SENIOR MONK HOUSE

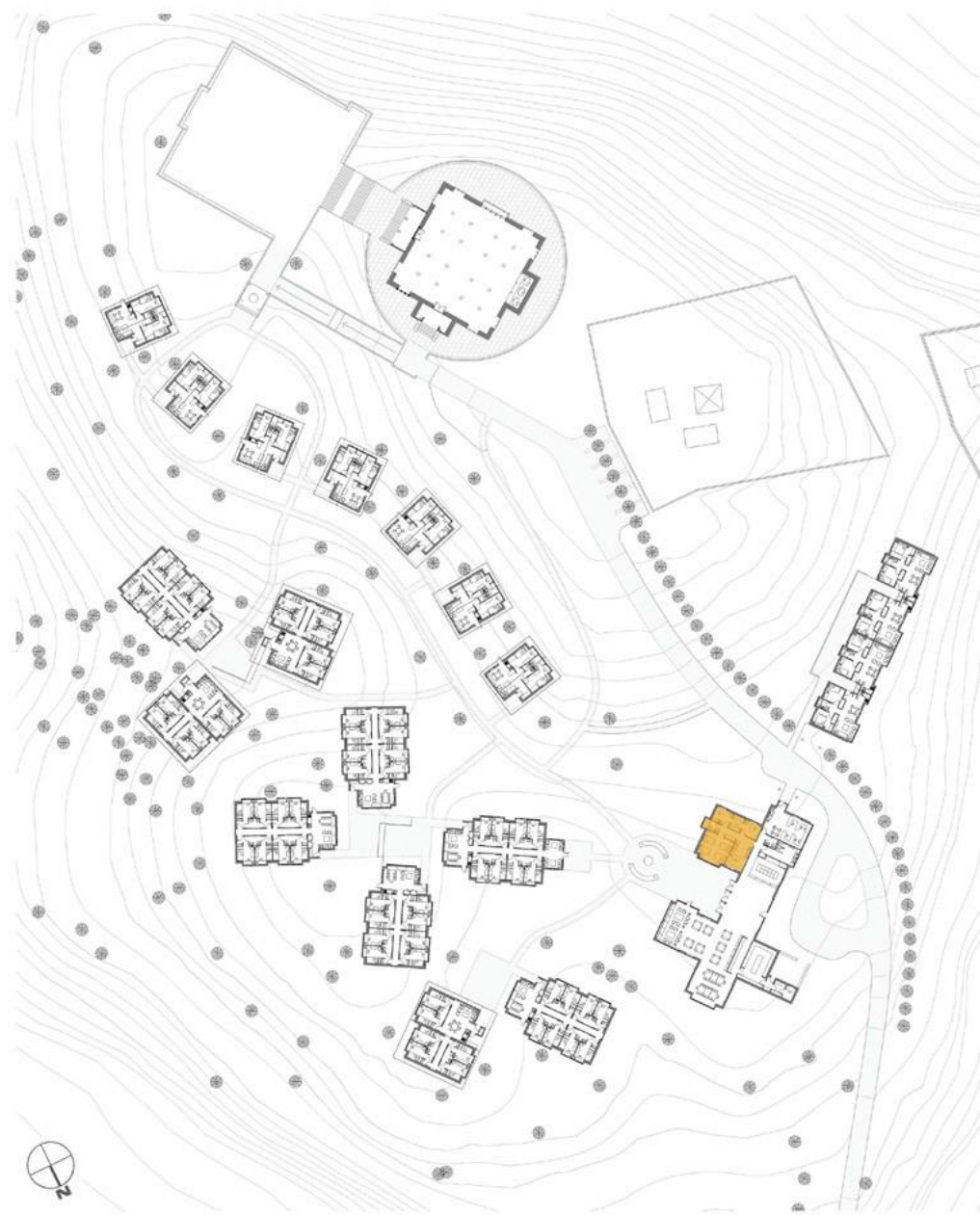
6 SENIOR MONK HOUSE

8 SENIOR MONK HOUSE









## Clinic

Infirmery and 24-Hour Care

Operated by hired staff and monks

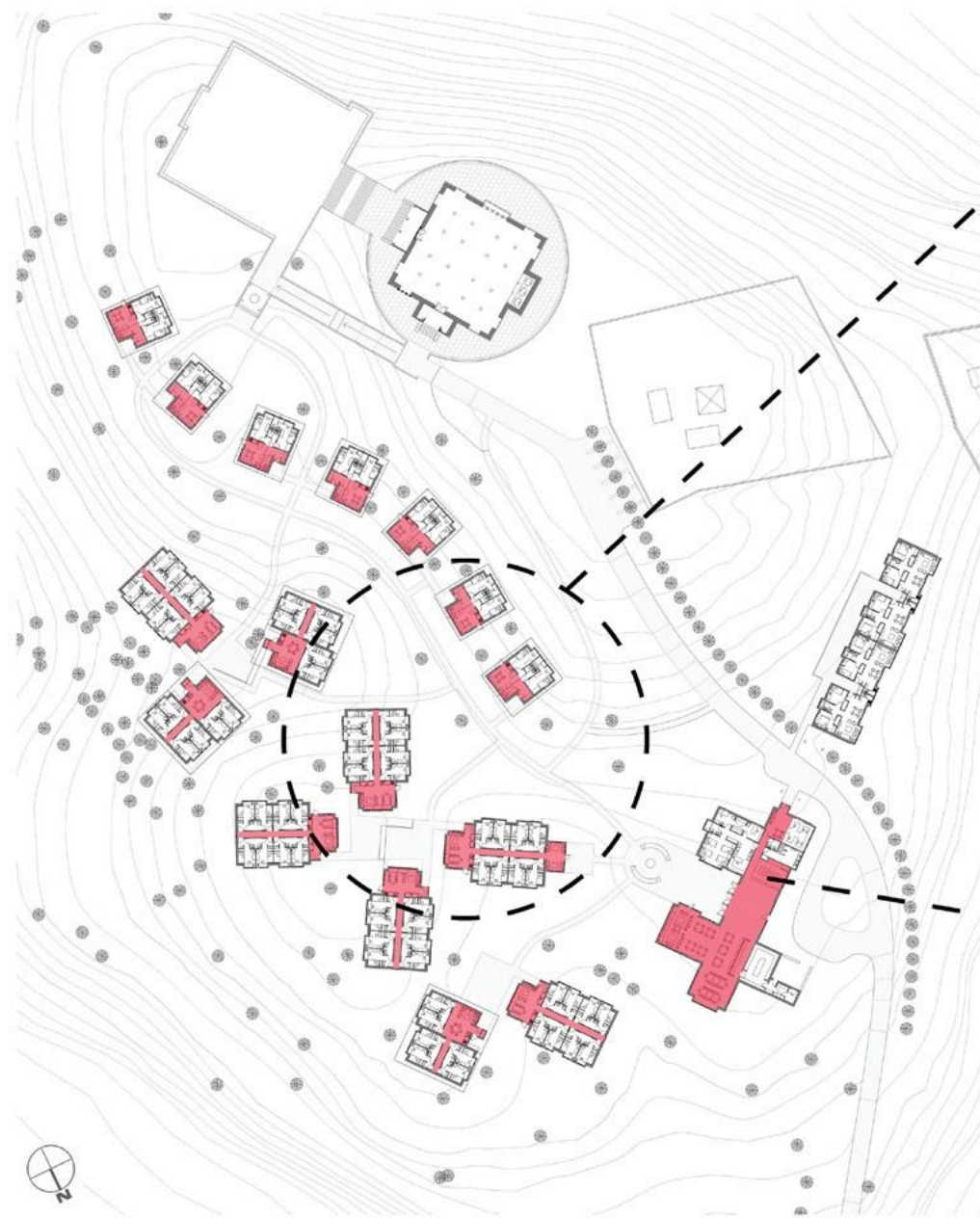
Consciously located adjacent to primary social spaces and ambulance drop-off

Views toward residential community, temple, and community building forecourt

## Shared Spaces

Living rooms and kitchens in each residence offer opportunities for gathering and semi-independent living. These spaces host overnight caregivers when needed and are strategically placed adjacent to outdoor gathering areas

The community building accommodates dining and gatherings of many kinds from formal receptions to joint programs with a nearby middle school and informal lounging and study in the library





## Landscape

Wheelchair accessible walkways connect all buildings and are outfitted with handrails

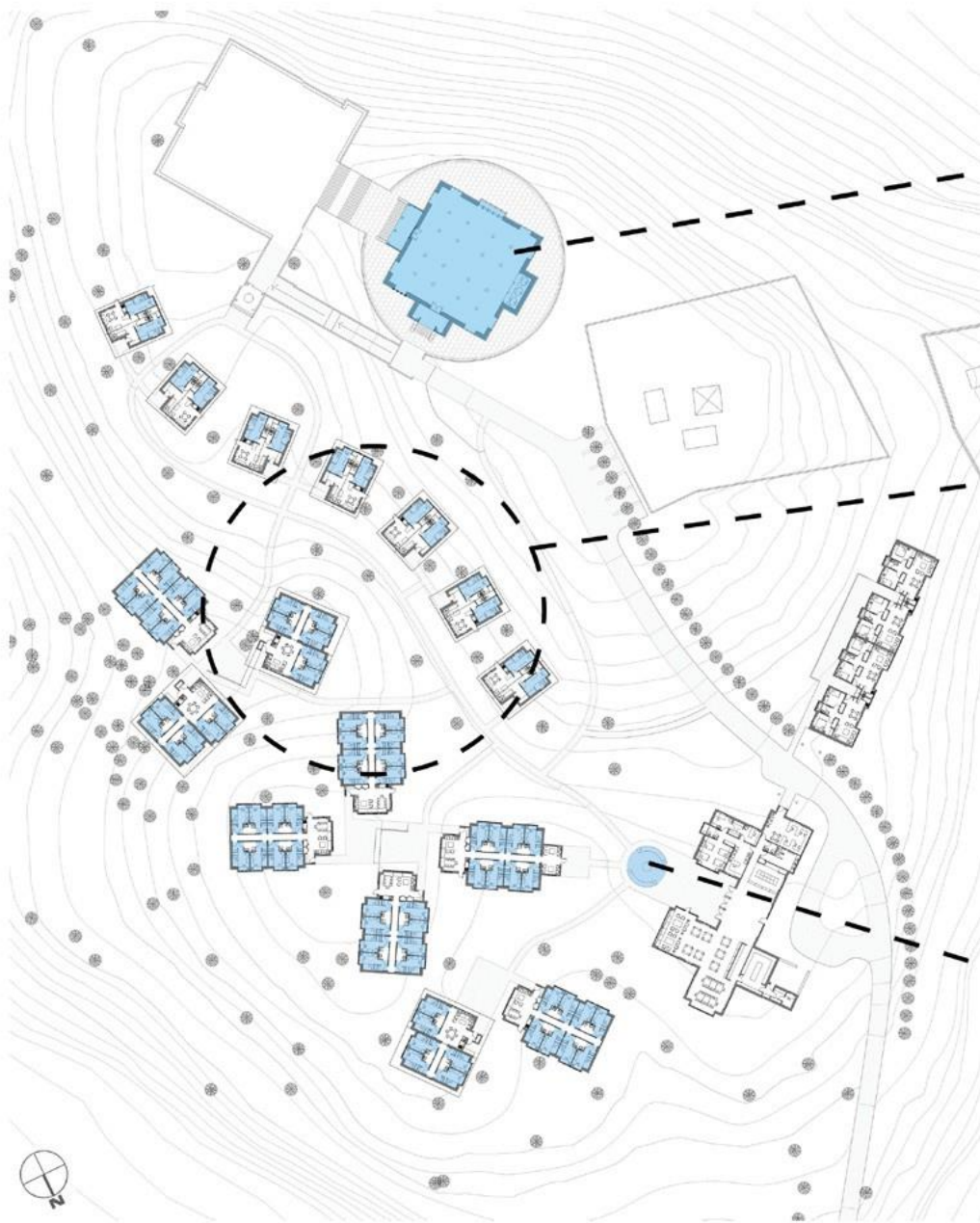
Corner porticos in all residences pair with neighbors, expanding shared space and creating courtyards

## Sacred Spaces

A future monastic temple will become the sanctuary's central religious space and a major sacred site for the region. Following tradition, the building will be designed by a local master builder of Buddhist temples

All bedrooms in every house are designed to accommodate meditation, prayer, personal shrines, and silent retreats lasting a week or longer. The entry sequences into bedrooms are designed so that food can be delivered to monks without interrupting silent retreats

An iconic prayer wheel is purposefully positioned at the entry to the forecourt of the community building













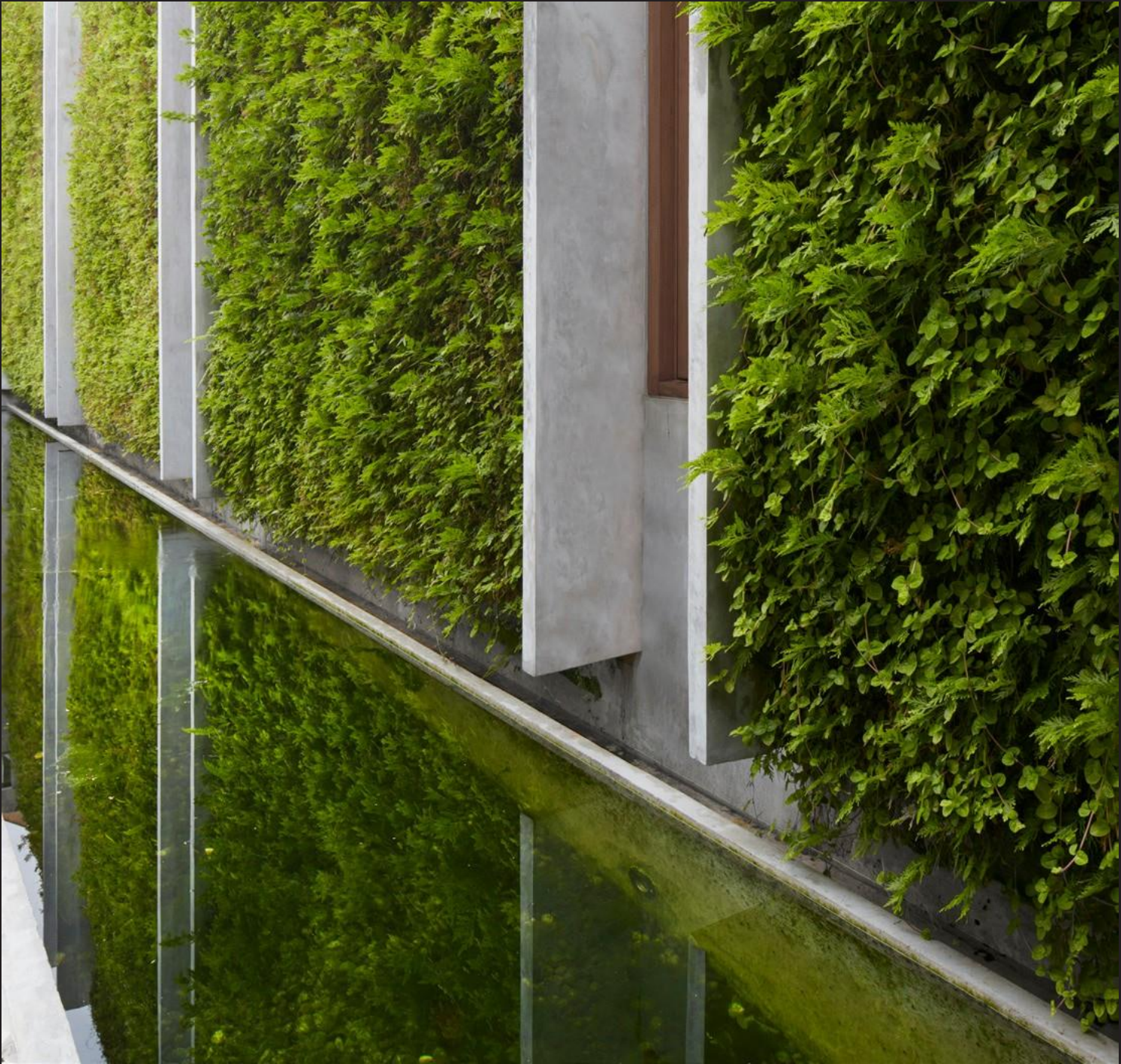
# Astrid Hill House

## Singapore









# Living Room by Octave

## Shanghai















































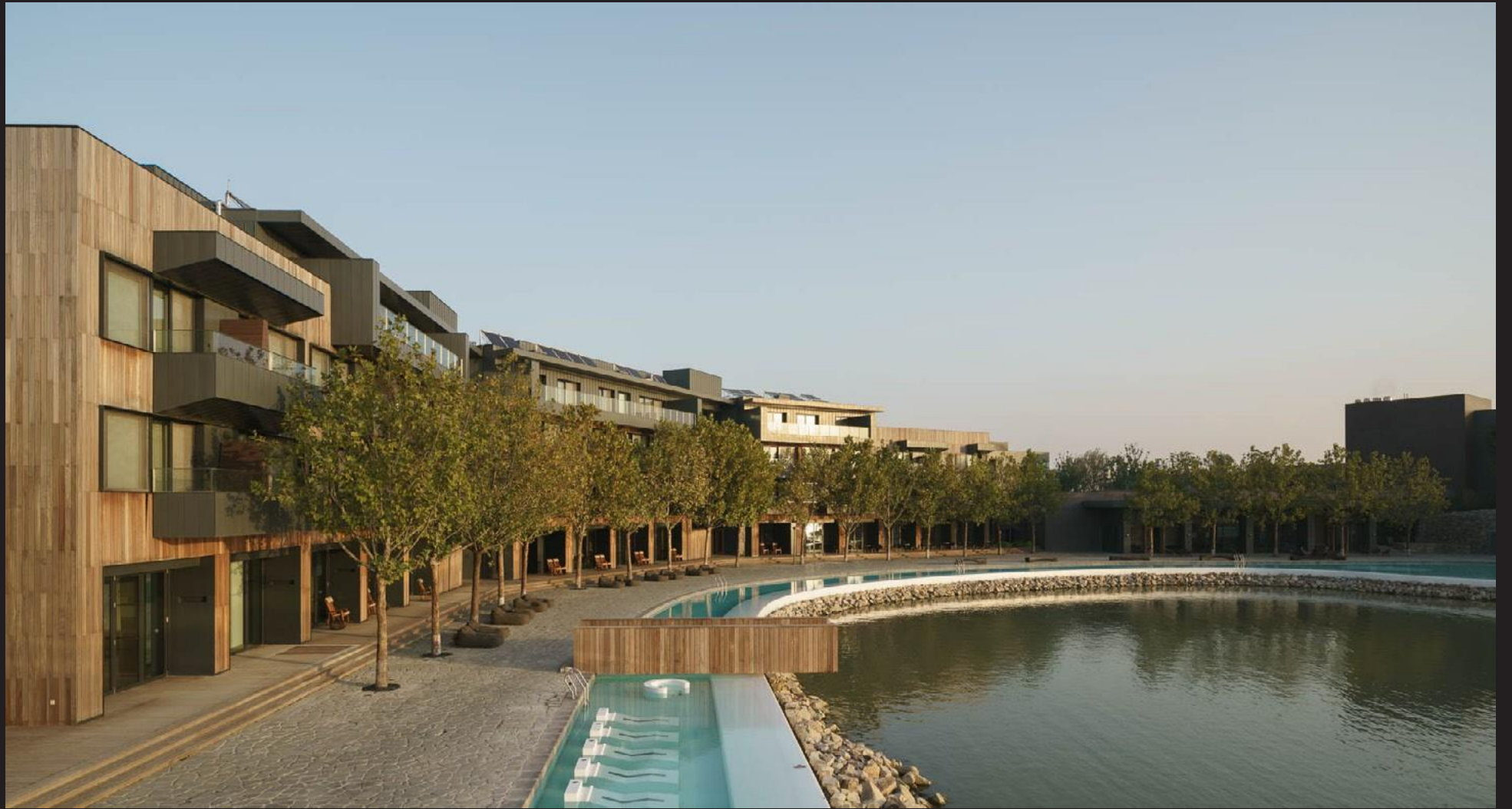




# Sangha

## Suzhou

























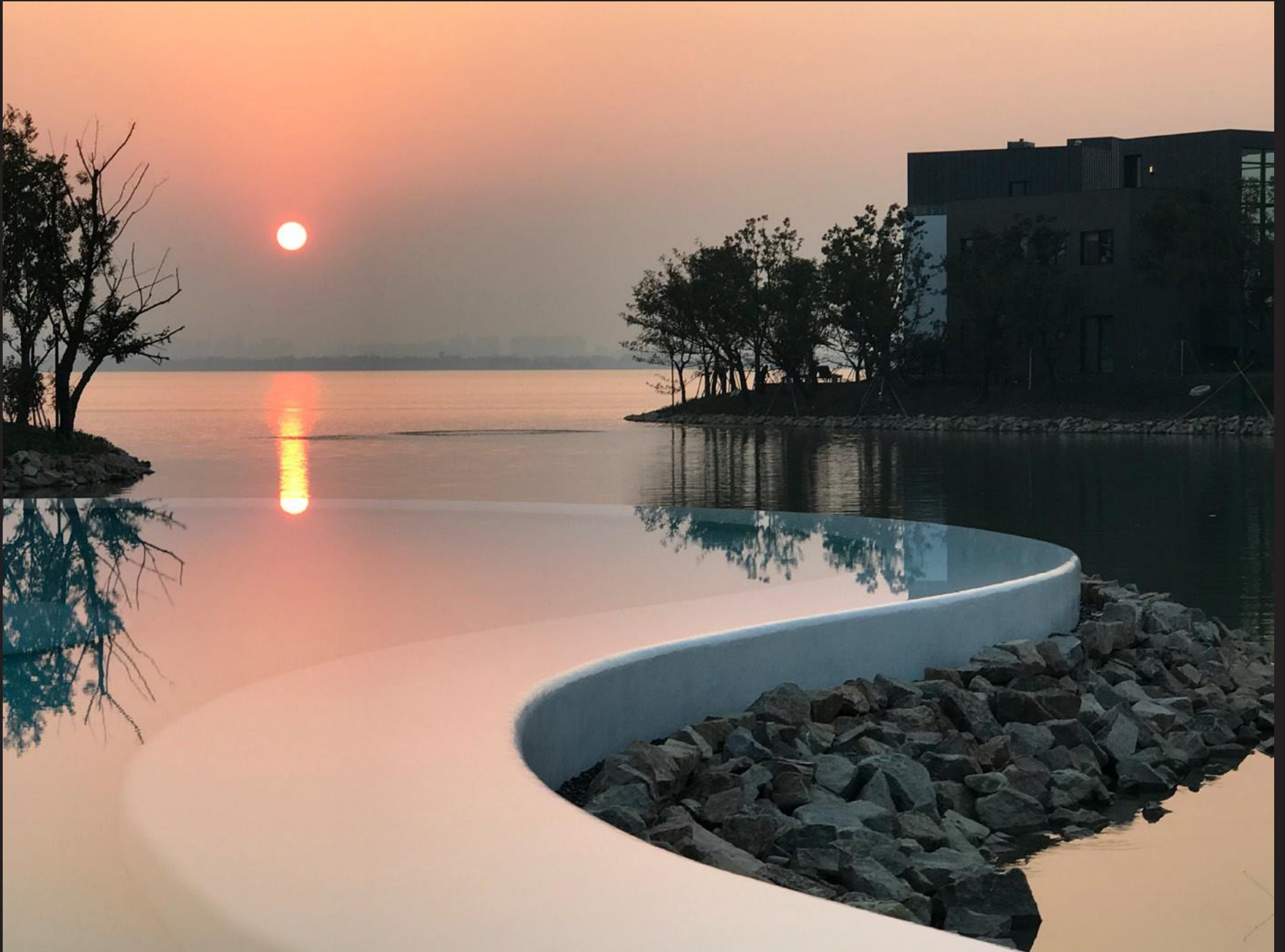














Tsao & McKown